

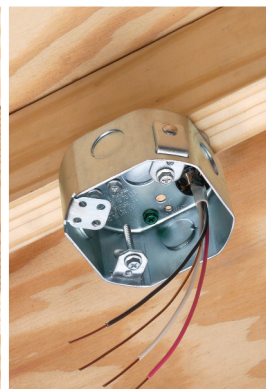
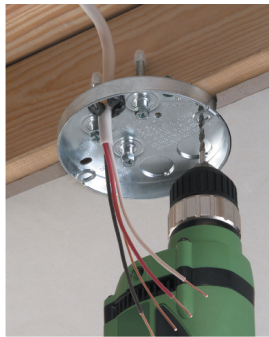
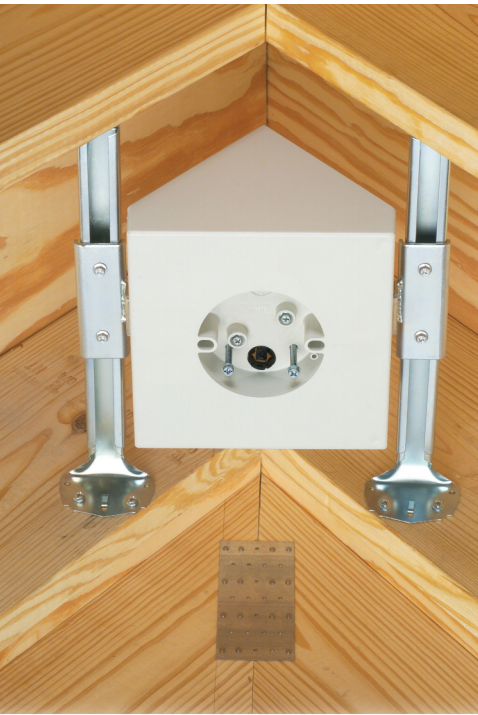


**Arlington®**

UL/CSA LISTED

# Fan & Fixture Boxes

STEEL OR PLASTIC OR A COMBINATION





# Choose the Fan or Fixture Box that's right for you...

No matter what your needs or installation preferences, Arlington has a fan/fixture box to fit.

We manufacture a variety of steel and non-metallic boxes in

many depths and cubic inch

capacities that install directly to the joist(s)

for an extra-secure installation.

Our boxes that mount under the joist deliver a safe, secure

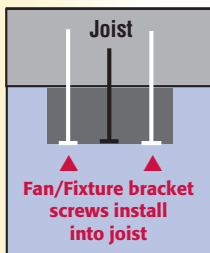
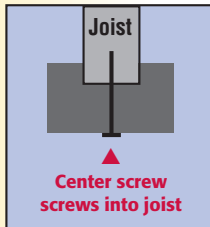
installation because both the box and the bracket install directly to the joist!

Plus, we have a box for every ceiling condition!

**For ceilings up to 1-1/2" thick.**

**Applications include:**

- 1/2" or 5/8" single drywall
- Double drywall
- Drywall mounted to hat channel, or furring strips, then to the joist
- Single or double joists
- Cathedral or sloped ceilings



## Under Joist Mount

page **4**

**FBS405, FBS405T**  
6.0 cubic inches

**FBS407, FBS407T**  
8.0 cubic inches



**for NEW CONSTRUCTION**



## Under Joist Mount

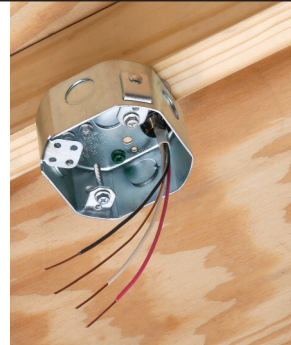
page **5**

**FBS415**  
1-1/2" depth  
14.6 cubic inches

**FBS420**  
2" depth  
20.0 cubic inches



**For NEW CONSTRUCTION**



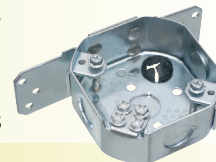
## Side Mount

page **5**

**FBS415S**  
1-1/2" depth  
14.6 cubic inches

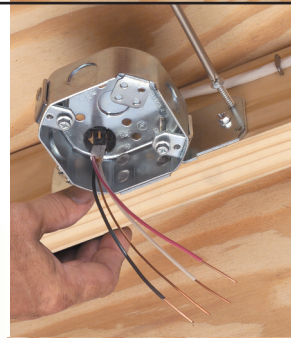
**FBS420S**  
2" depth  
20.0 cubic inches

**For NEW CONSTRUCTION**



**FBS1423**  
2-3/8" depth  
23.0 cubic inches

**For NEW WORK and RETROFIT**



## Mounts Between Joists with Adjustable Brackets

pages **6-7**

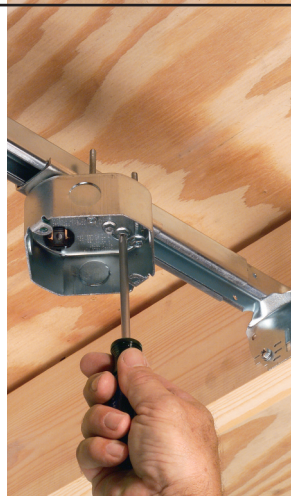
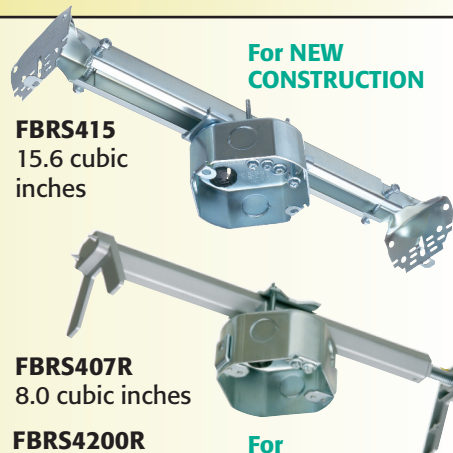
**For NEW CONSTRUCTION**

**FBR415**  
15.6 cubic inches

**FBR407R**  
8.0 cubic inches

**FBR4200R**  
20.0 cubic inches

**For RETROFIT**



## For Suspended Ceiling Frames

pages **8-10**

**FBR420SC, FS420SCL**  
2" depth, 20.0 cubic inches

**FS427SCL**  
2-1/8" depth, 30.0 cubic inches

**FB428SC, F428SC**  
28.0 cubic inches



# Steel



**Arlington®**





## in Steel or Plastic...or a Combination!



**FB405**  
6.0 cubic inches  
**FB407**  
8.0 cubic inches  
**FB412**  
14.4 cubic inches



### Joist Mount

page **10**

Each of our boxes is Listed to hold fans and fixtures of a specific weight; generally from 35 lbs to 200 lbs, depending on the box.



Our non-metallic boxes offer a 2-hour fire rating.

Most of Arlington's fan boxes ship with an installed NM cable connector, mud cover in place and captive installation screws for both the box and the fan/fixture mounting bracket.



**FB415**  
10.3 cubic inches  
**FB423**  
19.5 cubic inches  
**FB426, FB426F**  
16.0 cubic inches



### Press Hold Joist Mount

page **13**



**FB442**  
13.4 cubic inches  
**FB443**  
18.3 cubic inches  
**FB444**  
25.6 cubic inches



### Extra Deep Side Mount

page **14**

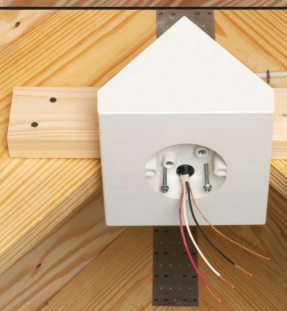
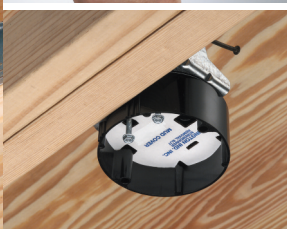


**Side Mount**  
**FB417S**  
20.0 cubic inches  
**FB417SLP** Low profile  
20.0 cubic inches  
**FBA426**  
21.0 cubic inches  
**Adjustable Bracket**  
**FBR423** 23.0 cubic inches



### Plastic Box with Steel Bracket

pages **12-13**



**FBX900, FB900**  
14.5 cubic inches for cathedral ceilings  
**FB450**  
14.5 cubic inches for sloped ceilings



### For Cathedral & Sloped Ceilings

page **11**





# Steel Boxes **JOIST MOUNT**

## FBS405 FBS405T

for 1/2" and 5/8" drywall

Number of conductors  
(3) #14, (2) #12, (2) #10

## FBS407 FBS407T

for 5/8" drywall

Our cost-effective, plated steel FBS405 and FBS407 pan boxes mount directly to a ceiling joist for a super-secure installation.

### ■ For NEW CONSTRUCTION

### ■ UL Rated

**Fans** up to 70 lbs

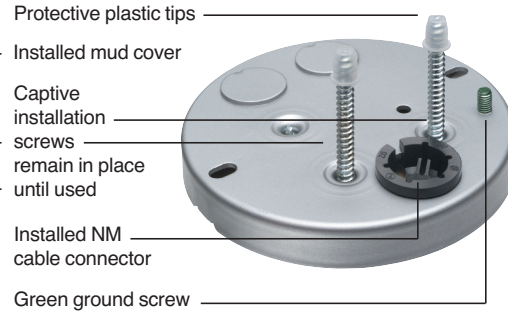
**Fixtures** up to 200 lbs

### ■ CSA

**Fans/Fixtures** up to 50 lbs

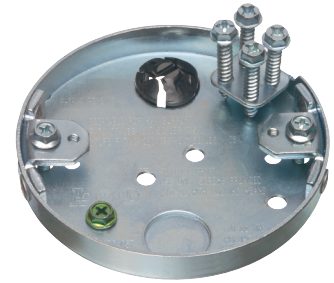
## Mount Under Joist

FBS405



CATALOG NUMBER	UPC/DCI/NAED MFG. #018997	CUBIC INCHES	CEILING THICKNESS	UNIT PKG	STD PKG
FBS405	76185	6.0	1/2", 5/8"	25	25
FBS407	76187	8.0	5/8"	25	25
* FBS405T	40500	6.0	1/2", 5/8"	25	25
* FBS407T	40700	8.0	5/8"	25	25

\* with threaded openings and #10 screws (supplied) for mounting fan/fixture bracket.



FBS405T  
inside view



**1** **Secure installation.** Box mounts directly to joist with captive screw near center.



**2** **Convenient.** Drill (2) 1/8" diameter holes into joist through elongated openings on each side of box. Remove the (2) screws noted above. Use to mount the bracket.



**3** **Easy.** Mount bracket into the holes with the (2) long screws removed previously. Mount fan/fixture per manufacturer's instructions.

**Arlington's Fan/Fixture boxes ship with an installed**

**NM cable connector and mud cover –**

**And captive installation screws for the box and bracket.**

**No parts to lose or misplace...they ship ready to use!**

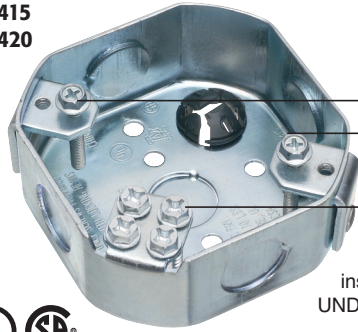
Patented





## Mount Under Joist

FBS415  
FBS420



Captive  
bracket  
installation screws

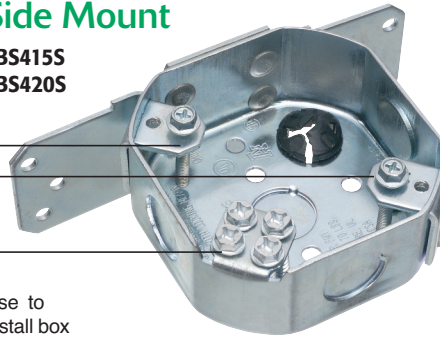
Box to joist  
installation  
screws

Use to  
install box  
UNDER joist



## Side Mount

FBS415S  
FBS420S



Use to  
install box  
ON SIDE of joist

Installed NM  
cable connector

FBS415

FBS415S Side Mount  
1-1/2" deep steel box

FBS420

FBS420S Side Mount  
2" deep steel box

Arlington's octagonal steel boxes mount directly to a joist for a strong, safe fan or fixture installation in **New Work Only**.

FBS415 and FBS420 mount securely **UNDER** the joist.

### ■ UL Rated

Fans up to 70 lbs

Fixtures up to 200 lbs

### ■ CSA

Fans/Fixtures up to 50 lbs

FBS415S and FBS420S mount on the **SIDE** of the joist.

### ■ UL Rated

Fans/Fixtures up to 70 lbs

### ■ CSA

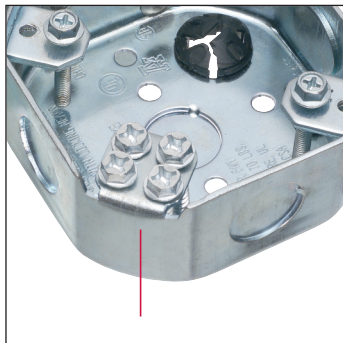
Fans/Fixtures up to 50 lbs

Patented

CATALOG NUMBER	UPC/DCI/NAED MFG. #018997	CUBIC INCHES	BOX DEPTH	UNIT PKG	STD PKG
<b>Under Joist Mount</b>					
FBS415	75204	14.6	1-1/2"	25	25
FBS420	75200	20.0	2"	25	25
<b>Side Mount</b>					
FBS415S	75206	14.6	1-1/2"	25	25
FBS420S	75202	20.0	2"	25	25



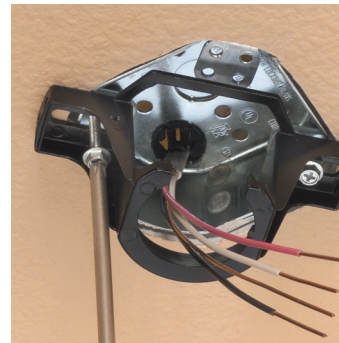
Installer removing captive screws in preparation for installing box to side of joist.



**1** Install box under, or on side of joist using the (4) captive screws.



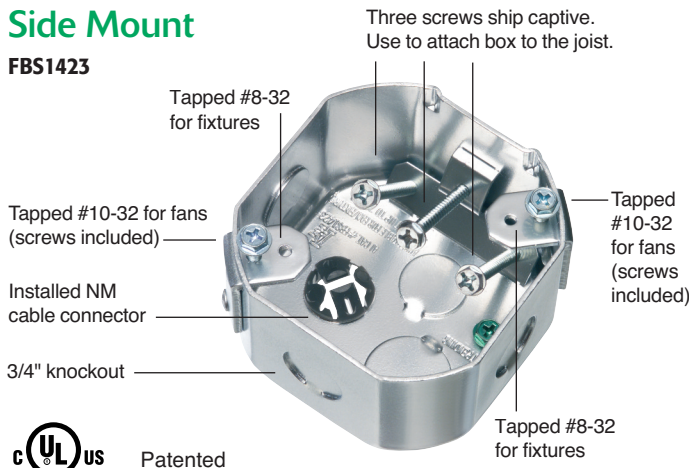
**2** OPTION: After removing screws, break-off tab with pliers.



**3** Use bracket installation screws to mount fan/fixture bracket to box.

## Side Mount

FBS1423



Three screws ship captive. Use to attach box to the joist.

Tapped #8-32 for fixtures

Tapped #10-32 for fans (screws included)

Installed NM cable connector

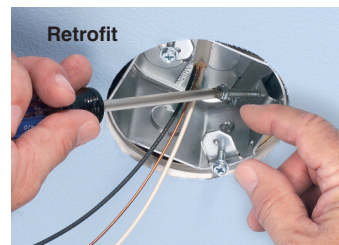
3/4" knockout

Tapped #10-32 for fans (screws included)

Tapped #8-32 for fixtures

cUL US Patented

CATALOG NUMBER	UPC/DCI/NAED MFG. #018997	CUBIC INCHES	BOX DEPTH	UNIT PKG	STD PKG
FBS1423	76190	23.0	2-3/8"	10	10



Retrofit



New Work

Place box at proper depth; attach to joist with three captive screws in the box.

FBS1423 Side Mount

2-3/8" deep steel ONE-BOX™

For new construction or retrofit, this deep steel box side mounts to a joist for a secure, fan-rated installation.

### ■ UL Rated

Fans/Fixtures up to 70 lbs

### ■ cUL

Fans/Fixtures up to 50 lbs

**Arlington**™

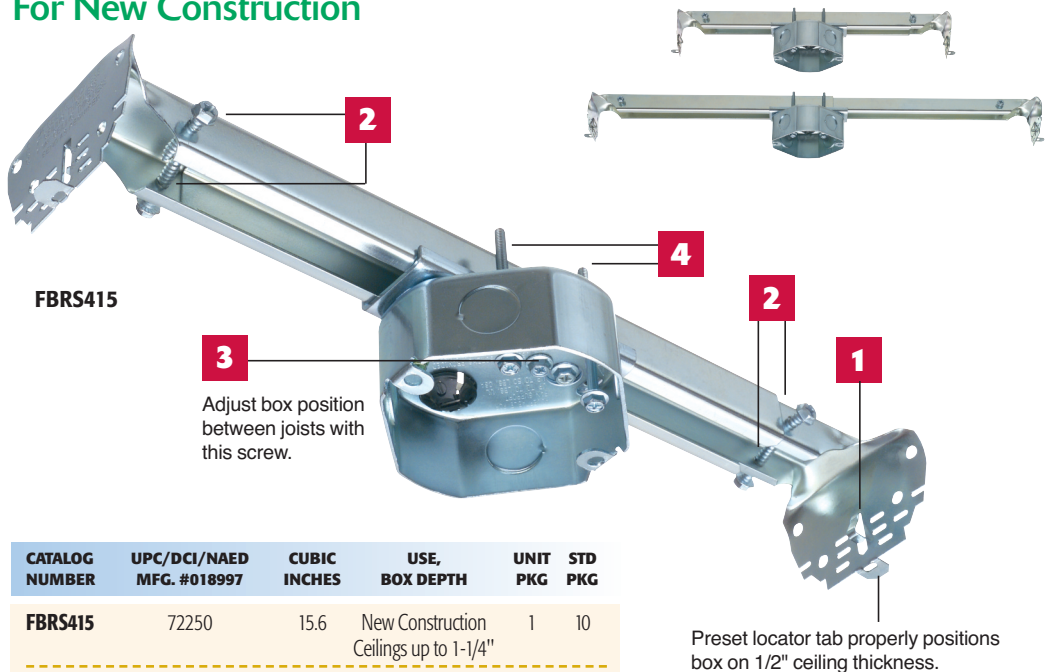


# Plated Steel Boxes with **ADJUSTABLE MOUNTING BRACKETS**

Arlington's super heavy-duty, plated steel fan/fixture boxes, with fully adjustable mounting brackets, are the innovative alternative to existing bar hanger brackets. Their heavy-duty construction eliminates fan wobble.

Plus, there are no bagged parts or pieces to lose. FBR5415, for new construction, *and* FBR54200R, FBR5407R for retrofit, ship ready to use, with all mounting hardware secured in the assembly.

## For New Construction



CATALOG NUMBER	UPC/DCI/NAED MFG. #018997	CUBIC INCHES	USE, BOX DEPTH	UNIT PKG	STD PKG
FBR5415	72250	15.6	New Construction Ceilings up to 1-1/4"	1	10

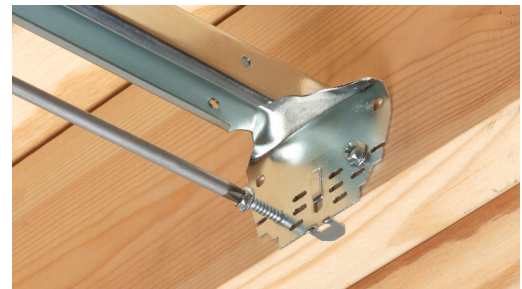
### FBR5415

#### for New Construction

- **For ceilings up to 1-1/4" thick**
- **Mounts easily, securely between joists 16" to 24" on center (o.c.)**
- **15.6 cubic inch**
- **UL Rated Fans:**  
up to 70 lbs at 24" o.c.  
up to 70 lbs at 16" o.c.
- **Fixtures:**  
up to 90 lbs at 24" o.c.  
up to 150 lbs at 16" o.c.
- **CSA Fans/Fixtures** up to 50 lbs



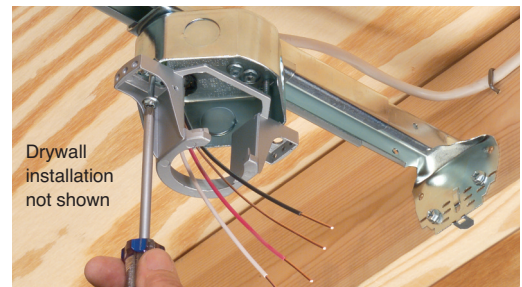
**1** "Tooth" holds bracket temporarily in place.



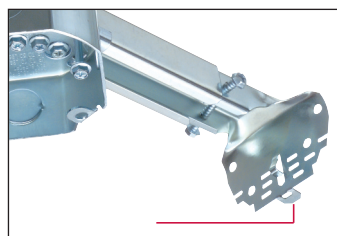
**2** Remove screws from both ends of bracket. Use them to attach bracket to joists.



**3** Adjust box position from 16" to 24" on center between joists.



**4** Install fan mounting bracket.



**CONVENIENT.** Tab positions box flush on 1/2" ceiling. Fits ceilings up to 1-1/4" thick. Scored bracket for easy installation.



**FLEXIBLE.** For flush ceiling installations on ceilings over 1/2" thick, bend the bracket along the scoreline that matches ceiling depth.



**GREAT FINISH.** Flush ceiling installation.



**Arlington®**



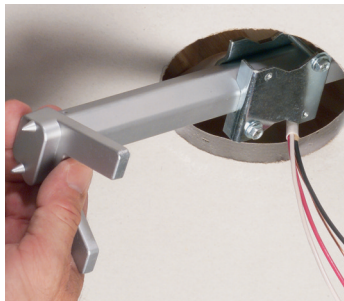
# Plated Steel Boxes with **ADJUSTABLE MOUNTING BRACKETS**

## For Existing Construction



**FBRS4200R**

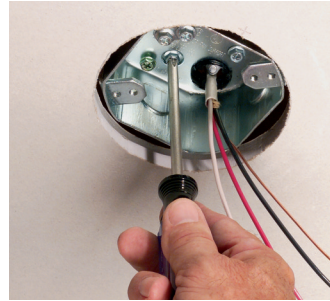
CATALOG NUMBER	UPC/DCI/NAED MFG. #018997	CUBIC INCHES	USE, BOX DEPTH	UNIT PKG	STD PKG
<b>FBRS4200R</b>	75315	20.0	Retrofit, 2" box Adjustable, 16" to 24" spacing	1	10



**1** Cut 4-1/16" hole in ceiling. Remove box from sled. Fit mounting bracket into hole. Position bracket between joists, with bracket feet resting on the ceiling.



**2** Tighten the hex bar with a wrench to secure bracket between joists. As the hex bar is tightened, bracket ends bite into the joists, holding the unit secure.



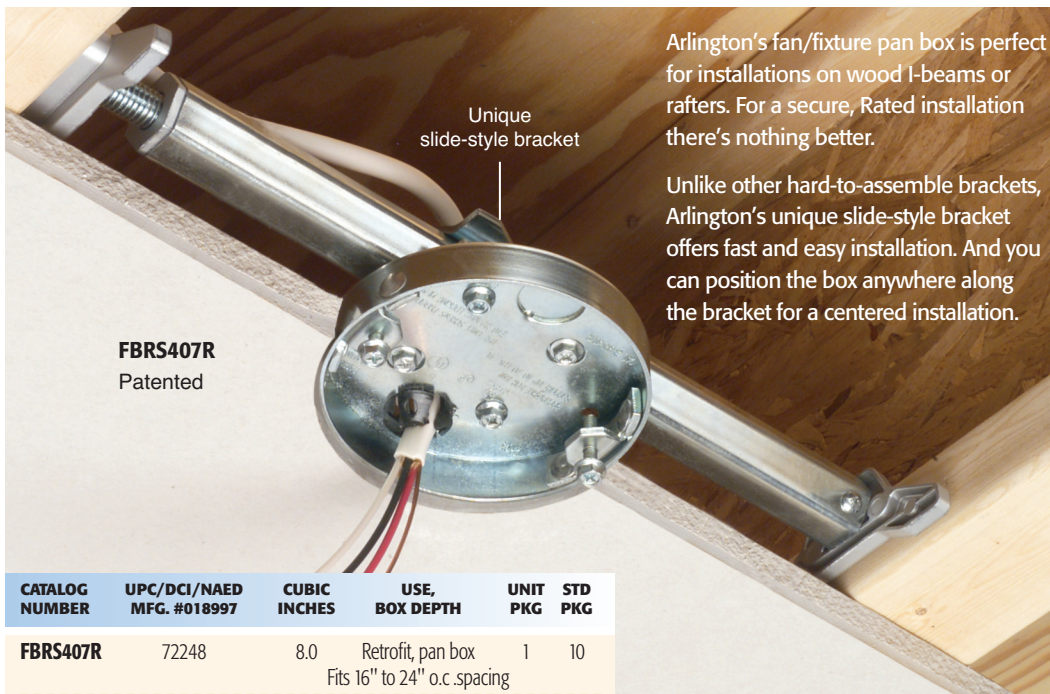
**3** Reattach box, and center it in hole. Attach bracket with screws supplied. Install fan/fixture per manufacturer's instructions.

### **FBRS4200R** for Existing Construction

- **Adjustable bracket - Mounts between joists or rafters 16" to 24" o.c.**
- **20.0 cubic inch box**
- **UL Rated Fans:**  
up to 70 lbs at 24" o.c.  
up to 70 lbs at 16" o.c.
- **Fixtures:**  
up to 90 lbs at 24" o.c.  
up to 150 lbs at 16" o.c.
- **CSA Fans/Fixtures**  
up to 50 lbs



## with PAN BOX for Wood I-Beams in Existing Construction



Arlington's fan/fixture pan box is perfect for installations on wood I-beams or rafters. For a secure, Rated installation there's nothing better.

Unlike other hard-to-assemble brackets, Arlington's unique slide-style bracket offers fast and easy installation. And you can position the box anywhere along the bracket for a centered installation.

CATALOG NUMBER	UPC/DCI/NAED MFG. #018997	CUBIC INCHES	USE, BOX DEPTH	UNIT PKG	STD PKG
<b>FBRS407R</b>	72248	8.0	Retrofit, pan box Fits 16" to 24" o.c. spacing	1	10
<b>FBRS40712R</b>	72247	8.0	Retrofit, pan box Fits 12" to 16" o.c. spacing	1	10

Drywall cut away to show installation between I-beams

### **FBRS407R** **FBRS40712R** for Wood I-Beams in Existing Construction

- **Box installs flush with ceiling**
- **For 1/2" and 5/8" drywall ceilings**
- **No parts to lose – ships with captive box adjustment screws, fan bracket installation screws and installed NM cable connector**
- **8.0 cubic inch box**
- **Adjustable bracket - Mounts between wood I-beams or rafters**  
**FBRS407R** 16" to 24" o.c. spacing  
**FBRS40712R** 12" to 16" o.c. spacing
- **UL rating**  
35 lb Fan • 50 lb Fixture
- **CSA**  
50 lb Fan or Fixture



# Plated Steel Fan/Fixture Box Kit for SUSPENDED CEILINGS

## FBR420SC

### Box Kit for Suspended Ceilings

Designed just for mounting a fan or fixture on a suspended ceiling grid, Arlington's FBR420SC fan/fixture box kit saves money! And 30 minutes of installation time.

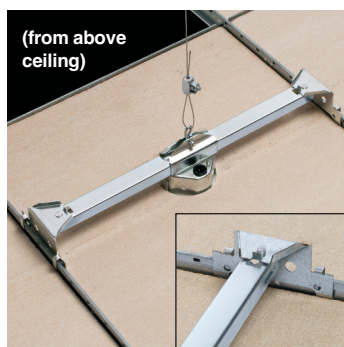
The box/bracket assembly ships with the box mounted securely on-center, ready to install on a 24" grid. For a centered installation, there's no need to adjust the box or bracket, but you can position the box where you want it.

There are no parts to lose! FBR420SC ships fully assembled. Installation and adjustment screws ship parked in place. There's an installed NM cable connector too.

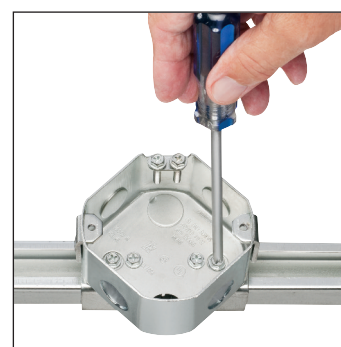
- **Fully adjustable mounting bracket**
- **2" deep, 20.0 cubic inch box**
- **UL Rating**  
70 lb fan or fixture
- **CSA**  
**Fans/Fixtures** up to 50 lbs
- **Listed for use in Environmental Air Handling spaces per NEC 300.22(c)**



**1** Cut a 4-1/16" diameter hole in a 24" ceiling tile.

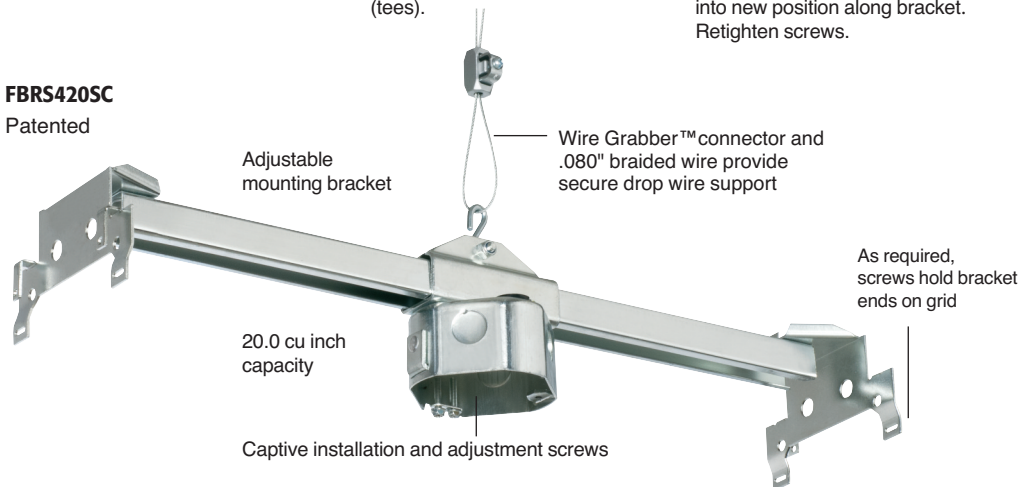


**2** Place box over hole. Place ends of support bar over the ceiling grid (tees).



**Positionable Box** To mount box off-center, loosen screws. Slide box into new position along bracket. Retighten screws.

**FBR420SC**  
Patented



Patented

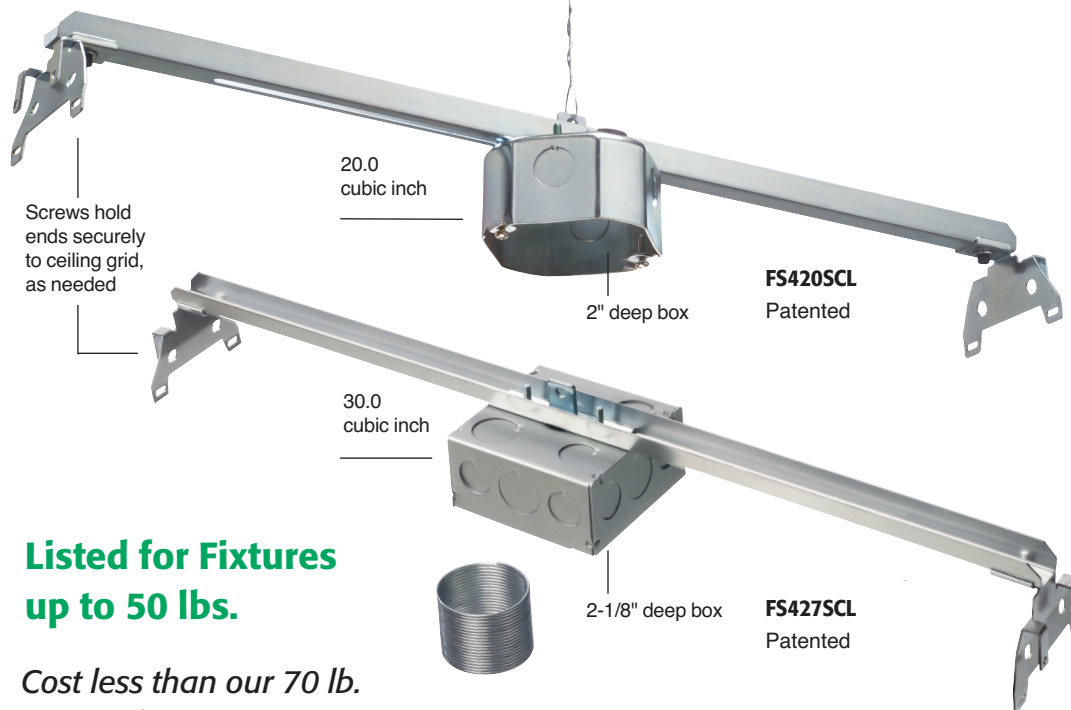


CATALOG NUMBER	UPC/DCI/NAED MFG. #018997	CU. INCH DEPTH	DESCRIPTION	UNIT	STD PKG
FBR420SC	75300	20.0 2" box	Fan/Fixture Box Kit for suspended ceilings	1	5

Kit includes box with captive installation and adjustment screws, adjustable bracket and Wire Grabber™ kit (connector, 12 ft .080" braided wire).



# Fixture Box Kit for SUSPENDED CEILINGS



**Listed for Fixtures up to 50 lbs.**

*Cost less than our 70 lb. UL rated FBR420SC*

Arlington's all-metal boxes, **just for fixtures**, are one-piece assemblies that ship ready to install – centered – on a 24" suspended ceiling grid. No assembly required.

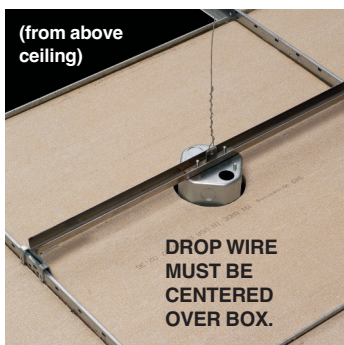
They supports exit lights, security cameras, motion sensors – and other fixtures up to 50 lbs.

No more guesswork. Installers who previously attached a metal box to a bracket in the field, then added a chain or wire for support, now have an assembly that is fully tested and rated to hold up to 50 lbs!

To mount box off-center, loosen the appropriate screws, slide the



**1** Cut a 4-1/16" diameter hole in 24" ceiling tile. (FS420SCL shown).



**2** Place box over hole.



**3** Snap ends of support bar over the ceiling grid (tees).



box along the bracket and retighten the screws.

■ **Easy, secure mounting to ceiling grid**

■ **Costs less than field-assembled components (box, bracket, wire)**

■ **Saves installation time**

■ **Listed for use in Environmental Air Handling spaces per NEC 300.22(c)**



**4** Cable pulled through cable connector (not supplied).



**5** Use FS420SCL or FS427SCL to install fixtures, security cameras, etc. Not fan rated.

Patented

CATALOG NUMBER	UPC/DCI/NAED MFG. #018997	CU. INCH/ BOX DEPTH	DESCRIPTION	UNIT	STD PKG
FS420SCL	12526	20.0 • 2"	Fixture Box Kit	1	10
FS427SCL	12537	30.0 • 2-1/8"	for suspended ceilings	1	10

FIXTURE rated units include one-piece box and bracket and drop wire



**Arlington®**



# T-BOX for SUSPENDED CEILINGS

## FBS428SC

Steel box with Metal hanger  
for Fans/Fixtures

## FB428SC

Plastic box with Metal hanger  
for Fans/Fixtures

## F428SC

Plastic box, Plastic hanger  
just for Fixtures

Arlington's economical  
**T-Box** is the cost-effective  
way to mount a fan or fixture  
on a suspended ceiling grid.

What's neat about **T-Box** is...  
it can be positioned on the  
ceiling grid at the cross of  
the T-rails – or on the  
straight away so you decide  
where you want the fan or  
fixture.

- Adjustable box height
- For use on premium/  
reveal edge ceiling tiles
- Meets NEC, section 314.27  
for fan and fixture boxes

### FBS428SC

- **UL Rated**  
Fans/Fixtures up to 70 lbs
- **CSA**  
Fans/Fixtures up to 50 lbs

### FB428SC

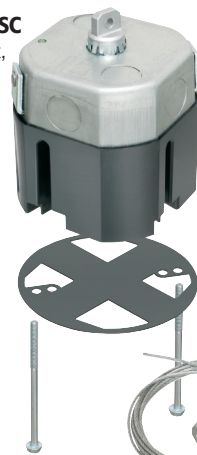
- **UL Rated**  
Fans/Fixtures up to 70 lbs

### F428SC

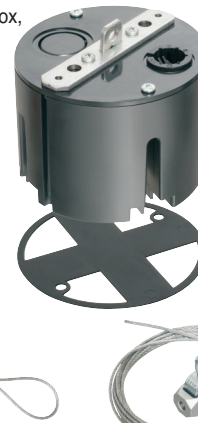
- **UL Rated**  
Fixtures only up to 50 lbs

Made in USA  
Patented

**FBS428SC**  
Steel box,  
metal  
hanger



**FB428SC**  
Plastic box,  
metal  
hanger



**F428SC**  
Plastic box,  
plastic  
hanger



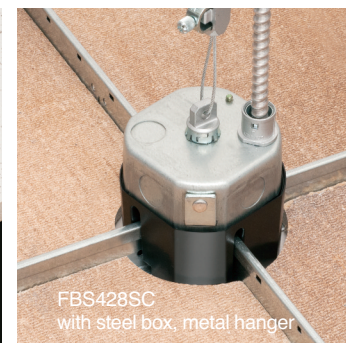
## FBS428SC Fan Installation on Cross



- 1** Determine box position.  
Installation on cross shown.



- 2** Cut around ceiling tile.



- 3** Drop box onto grid from overhead.  
Remove tabs as necessary to  
adjust ceiling tile height. Attach  
drop wire. Reinstall ceiling tiles.  
**Install fan/fixture with supplied  
screws.**

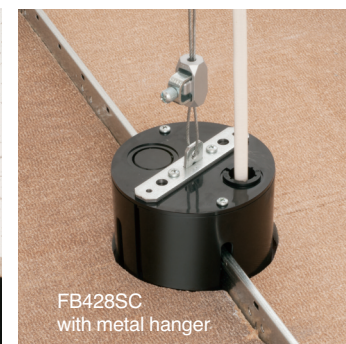
## FB428SC Fan Installation on Straight away



- 1** Determine box position.  
Installation on straight away shown.



- 2** Cut around ceiling tile.



- 3** Drop box onto grid from overhead.  
Remove tabs as necessary to  
adjust ceiling tile height. Attach  
drop wire. Reinstall ceiling tiles.  
**Install fan/fixture with supplied  
screws.**

*FB428SC Costs Less than our FBS420SC for fans.*

*F428SC Costs Less than the FS420SCL for fixtures.*

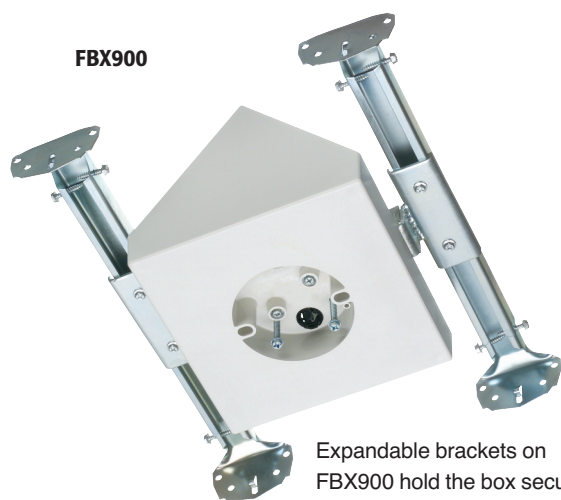
CATALOG NUMBER	UPC/DCI/NAED MFG. #018997	CUBIC INCHES	DESCRIPTION	UNIT PKG	STD PKG
<b>FBS428SC</b>	12782	30.5.0	Steel box, metal hanger	1	10
<b>FB428SC</b>	06911	28.0	Plastic box, metal hanger	1	10
<b>F428SC</b>	06910	28.0	Plastic box, plastic hanger	1	10

FBS428SC includes Wire Grabber™ w/ braided Drop Wire  
Support Kit, (2) #10-32-32 x 4" screws, grid cover

FB428SC includes Wire Grabber™ w/ braided Drop Wire Support Kit,  
installed NM cable connector, (2) #10-32-32 x 4" screws, grid cover

F428SC includes 12 ft support wire, installed NM cable connector,  
grid cover

# Plastic Boxes for CATHEDRAL CEILINGS



**FBX900**



**FB900**



**FB450**

Expandable brackets on FBX900 hold the box securely between joists – no need to cut, nail 2X4s to center the fan/fixture

Large 8" square mounting surface

## FBX900

Adjustable...  
for cathedral ceilings over 80°

## FB900

for cathedral ceilings over 80°

## FB450

for sloped ceilings up to 45°

Arlington's Fan/Fixture Boxes for cathedral or sloped ceilings deliver a secure, centered installation between two rafters, even if the mounting point is not centered.

- Taller sides on FBX900, FB900 fit ceilings with angles greater than 80°

### FBX900

- UL Rated Fans/Fixtures up to 70 lbs

### FB900, FB450

- UL Rated Fans up to 70 lbs  
Fixtures up to 200 lbs

### FBX900, FB900, FB450

- CSA Fans/Fixtures up to 50 lbs

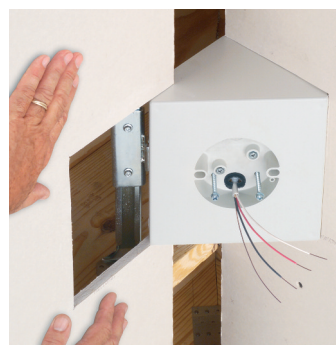
## FBX900



- 1 Use supplied template to level and position brackets between rafters. Remove captive screws from brackets, use to attach FBX900 assembly to rafters.

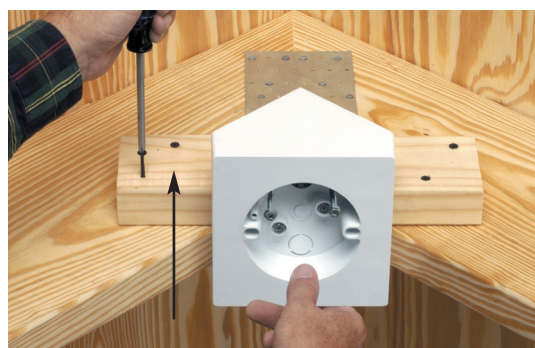


- 2 Loosen the screws noted in #1. Slide box along brackets to center it between rafters. Tighten screws. Install wires.



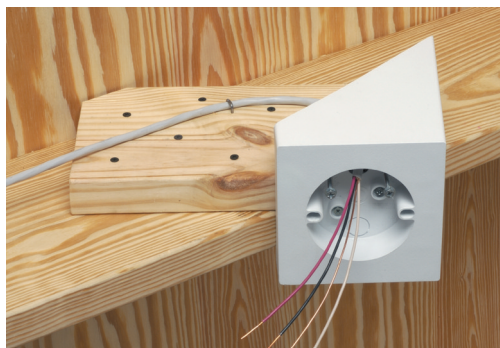
- 3 Cut and position drywall to fit around the box. Install fan or fixture per manufacturer's instructions using captive installation screws.

## FB900



Cut a 2x4 approximately 14" long to span rafters. Install FB900 in center, then attach the 2x4 to the rafters, keeping bottom of box level, and short sides of box touching angled rafters.

## FB450



Cut a 2x8 approximately 18" long. Install FB450 on 2x8 allowing it to extend 8 to 10" past the box. Keep bottom of box level, short side of box touching angled rafter. Nail or screw assembly to rafter.



Patented

CATALOG NUMBER	UPC/DCI/NAED MFG. #018997	CUBIC INCHES	DESCRIPTION	UNIT PKG	STD PKG
FBX900	75224	14.5	Adjustable. Fits Cathedral Ceilings with angles 80 degrees AND OVER	1	1
FB900	75250	14.5	Fits Cathedral Ceilings with angles 80 degrees AND OVER	1	1
FB450	75240	14.5	Fits Sloped Ceilings with angles UP TO 45 degrees	1	1





# Plastic Boxes **JOIST MOUNT**

## FB405

for 1/2" and 5/8" drywall

## FB407

for 5/8" drywall

## FB412

for 1/2" or 5/8" drywall with hat channel or furring strips, or double drywall

FB405, FB407, and FB412 offer the flexible, economical solution to 1/2" and 5/8" drywall ceiling, with or without hat channel or furring strips. FB405 and FB407 are perfect for double joists or wood I-beams.

- **Secure attachment to joist or rafter**
- **No parts to lose**
- **2-hour fire rating**
- **UL Rating**  
70 lb fan, 200 lb fixture
- **CSA 50 lb Fan or Fixture**

Tighten captive center screw to install box securely on joist



FB405



FB407

Screw Tunnels help center the box on joist

**Fast, easy installation**



FB412



FB412



FB412

**1** The FB412 fan/fixture box is perfect for 1/2" or 5/8" drywall with 3/4" furring strips or hat channel with a single layer of drywall...

**2** ...or double drywall (shown as cutaway).

CATALOG NUMBER	UPC/DCI/NAED MFG. #018997	CUBIC INCHES	DRYWALL THICKNESS	UNIT PKG	STD PKG
FB405	72185	6.0	1/2", 5/8"	25	25
FB407	72177	8.0	5/8"	25	25
FB412	72189	14.4	1/2", 5/8" *	25	25

Made in USA  
Patented



\* w/ furring strips or hat channel with a single layer of drywall or with a double layer of drywall

## FBR423

for New Construction

This low cost, economical steel fan/fixture bracket with non-metallic box delivers secure mounting between joists spaced 16" to 24" on center.

- **23.0 cubic inch**
- **2-hour fire rating**
- **UL Rated Fans:**  
up to 70 lbs at 24" o.c.  
up to 70 lbs at 16" o.c.
- **Fixtures:**  
up to 90 lbs at 24" o.c.  
up to 150 lbs at 16" o.c.

**Lower cost, larger box than our all steel FBR5415**



Captive fan bracket  
installation screws

Bracket ends adjust for flush installation on ceilings up to 1-1/4" thick. Pre-set for 1/2" ceiling. Bend on scoreline for other ceiling depths.



**1** Bracket mounts securely to joist.



**2** **Positionable Box** Loosen center screw to position box anywhere on bracket.

CATALOG NUMBER	UPC/DCI/NAED MFG. #018997	DESCRIPTION	UNIT PKG	STD PKG
FBR423	52310	23.0 cu in Non-metallic Fan/Fixture Box w Adjustable Steel Bracket	1	10

Made in USA  
Patented



**Arlington®**

# Plastic Boxes **PRESS HOLD • JOIST MOUNT**



## **FB415**

for 1/2" and 5/8" drywall

## **FB426**

for 1/2" and 5/8" drywall

## **FB423**

for 1/2" or 5/8" drywall with hat channel or furring strips with a single layer of drywall, or double drywall

FB415 and FB426 come with the screws you need to install the box and bracket, held captive until you're ready to use them.

### **Press Hold...Speed, Convenience, Safety**

These boxes have gripping tangs that press-hold the box to the joist while you reach for your screwdriver.

Tightening the center screw affixes the box onto the joist for a super-secure installation.

### ■ **2-hour fire rating**

### ■ **UL Rating**

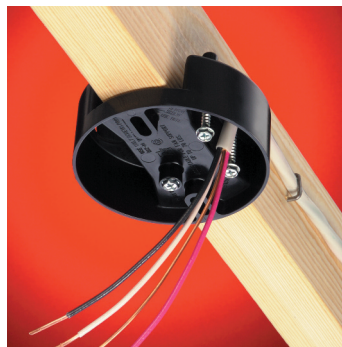
70 lb fan, 200 lb fixture

### ■ **CSA \*except for FB423**

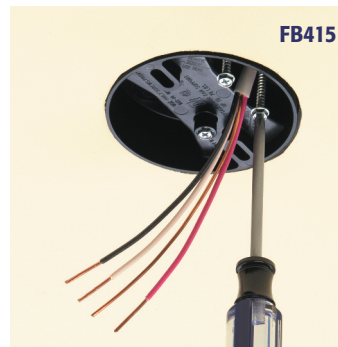
50 lb fan or fixture



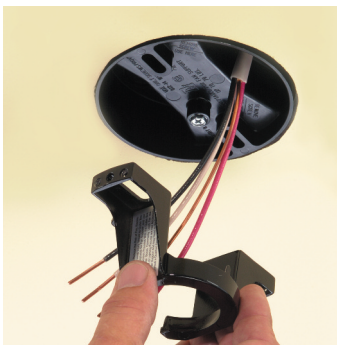
**1** Convenient. Gripping tangs hold box in place temporarily, until the center screw is tightened.



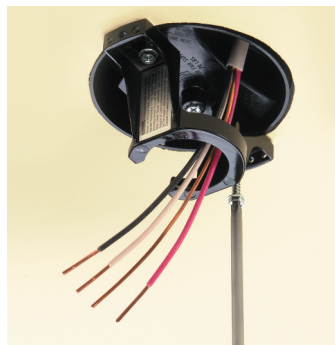
**2** Push NM sheathed cable through connector.



**3** Remove (2) long parked screws. Use them to install bracket.



**4** The fan/fixture bracket installs directly onto the joist through the oval slots in the box.



**5** Cable pulled through installed NM cable connector.

**Arlington's Fan/Fixture boxes ship with an installed NM cable connector and mud cover – as well as captive installation screws for the box and bracket.**

**No parts to lose or misplace...ready to use!**



\* w/ furring strips or hat channel with a single layer of drywall or with a double layer of drywall

CATALOG NUMBER	UPC/DCI/NAED MFG. #018997	CUBIC INCHES	DRY WALL THICKNESS	UNIT PKG	STD PKG
<b>FB415</b>	72167	10.3	1/2", 5/8"	25	25
<b>FB426</b>	72179	16.0	1/2", 5/8"	25	25
<b>FB426F</b>	25217	16.0	1/2", 5/8"	25	25
<b>FB423</b>	72190	19.5	1/2", 5/8" *	25	25





# Plastic Boxes **EXTRA DEEP • SIDE MOUNT TO JOIST**

## FB444

**Our largest capacity  
L-shaped box**

## FB442

## FB443

**Lowest cost L-shaped boxes**

FB444 is the largest capacity box we make! Its 25.6 cubic inch capacity provides plenty of room for wires – easy access too!

The slightly smaller FB442 and FB443 offer the same great features and benefits at a lower cost.

- **Boxes mount to single or double joists or rafters with a shipped-in-place center screw**
- **Locator posts assure correct positioning of bracket**
- **2-hour fire rating**
- **UL Rated**  
**Fans** up to 70 lbs  
**Fixtures** up to 200 lbs

FB444



Locator Post for bracket installation screws

FB442



Locator Post

**Accurate!** Locator posts on these L-shaped boxes assure proper positioning of the installation bracket.



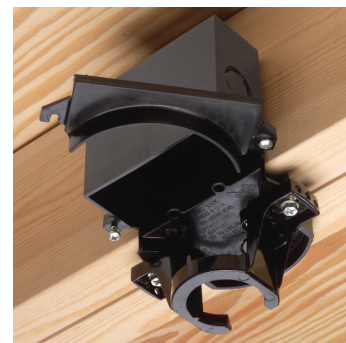
## FB444



**1** **Fast** and easy installation on single or double joists.



**2** **Easy** bracket installation on FB444. (Drywall installation not shown).



**3** **Easy access.** FB444 OPTION: To restuff wires, open bottom of the box – before drywall installation.

## FB442



**1** **Secure!** Side mount the box to the joist using the shipped-in-place center screw.



**2** **Pull wires.** (Drywall installation omitted). After ceiling is installed, remove captive installation screws. Use them to install bracket.



**3** **Done!** Install fan or fixture per manufacturer's instructions.

Patented



**Arlington®**

CATALOG NUMBER	UPC/DCI/NAED MFG. #018997	CUBIC INCHES	DRYWALL THICKNESS	UNIT PKG	STD PKG
FB442	72194	13.4	1/2", 5/8"	25	25
FB443	72197	18.3	1/2", 5/8"	25	25
FB444	72187	25.6	1/2", 5/8"	25	25





# Plastic Boxes with **STEEL BRACKET • SIDE MOUNT TO JOIST**

**FB417S**



**FB417SLP**

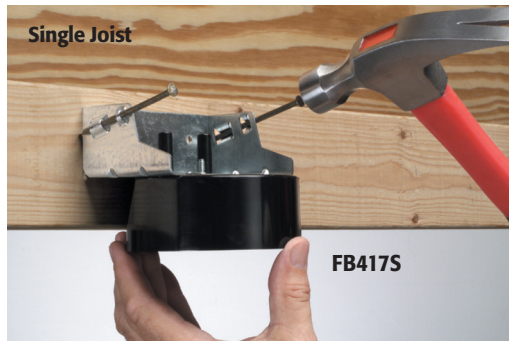


**Nail onto Single  
or Double Joists**

Low profile FB417SLP is suitable  
for manufactured I-beams

\* **FB417S** fits ceilings up to 1-1/2" thick, also  
single-sheeted drywall mounted to furring strips  
or hat channel – or double drywall

CATALOG NUMBER	UPC/DCI/NAED MFG. #018997	CUBIC INCHES	CEILING THICKNESS	UNIT PKG	STD PKG
<b>FB417S*</b>	72171	20.0	up to 1-1/2"	25	25
<b>FB417SLP</b>	72199	20.0	1/2", 5/8"	25	25



**Single Joist**

**FB417S**



**Double Joist**

**FB417S**

**Fast.** Simply nail the box to the joist. Indicator lines  
on FB417S assure proper positioning on the joist  
for the ceiling thickness.

FB417S and FB417SLP side mount to single or  
double joists for a secure fan rated installation.

**FB417S**

for ceilings up to 1-1/2" thick

**FB417SLP**

Low profile for  
1/2" or 5/8" ceilings

FB417S saves time! Nail on  
installation, and indicator  
marks for 1/2", 5/8", and 3/4"  
ceiling thicknesses make it a  
good choice for speedy attach-  
ment to single or double joists.

Use the low profile FB417SLP  
for 1/2" or 5/8" ceilings – or  
manufactured I-beams.

- **Nail on installation**
- **20.0 cubic inch**
- **UL Rated** 70 lb Fan or Fixture

## **FBA426 • IN/OUT™ Box**

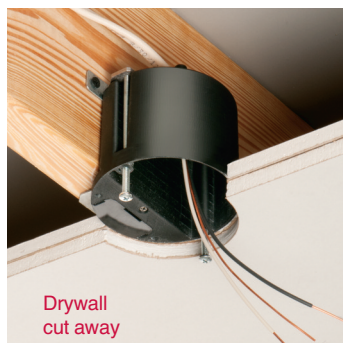
**Adjustable bracket fits ceiling  
thicknesses up to 1-1/2"**

For new work, the 21.0 cubic  
inch FBA426 is pre-set for a  
1/2" ceiling. The depth  
adjustment screw positions  
the box flush with the ceiling  
*after* the ceiling's in place.

- **Screw mounts to joist(s)**
- **UL Rated**  
**Fans** up to 70 lbs  
**Fixtures** up to 100 lbs

**All of these boxes...**

- **Ship ready to install on  
single or double joists  
with captive nail or screws**
- **2-hour fire rating**



**Drywall  
cut away**



**Depth adjustment screw**

**1** Box set back in installed double  
drywall.

**2** If needed use depth adjustment  
screw to position box flush with ceiling.

**FBA426**



**Underside**

**Screw onto Single or Double Joists**

CATALOG NUMBER	UPC/DCI/NAED MFG. #018997	CUBIC INCHES	CEILING THICKNESS	UNIT PKG	STD PKG
<b>FBA426</b>	02575	21.0	For 1/2" - up to 1-1/2"	25	25



**Made in USA**

Patented



**Arlington®**



# Fan/Fixture Box Rating and Number of Single Conductors

Catalog Number	Category	Cubic Inches	UL Fan	CSA Fan	UL Fixture	CSA Fixture	Number of Single Conductors		
			Load Rating (Lbs)	Load Rating (Lbs)	Static Rating (Lbs)	Static Rating (Lbs)	#14	#12	#10
FB405	PLASTIC	6.0	70	50	200	50	3	—	—
FB4050	PLASTIC	6.0	70	50	200	50	3	—	—
FB407	PLASTIC	8.0	70	50	200	50	4	3	3
FB4070	PLASTIC	8.0	70	50	200	50	4	3	3
FB412	PLASTIC	14.4	70	50	200	50	7	6	5
FB415	PLASTIC	10.3	70	50	200	50	5	4	4
FB4150	PLASTIC	10.3	70	50	200	50	5	4	4
FB417S	PLASTIC & STEEL	20.0	70	---	70	---	10	8	8
FB417SLP	PLASTIC & STEEL	20.0	70	---	70	---	10	8	8
FB423	PLASTIC	19.5	70	---	200	---	9	8	7
FB426	PLASTIC	16.0	70	50	200	50	8	7	6
FB426F	PLASTIC	16.0	70	50	200	50	8	7	6
F428SC	PLASTIC	28.0	---	---	50	---	---	---	---
FB428SC	PLASTIC	28.0	70	---	70	---	---	---	---
FBS428SC	STEEL	30.5	70	50	70	50	---	---	---
FB442	PLASTIC	13.4	70	---	200	---	6	4	4
FB443	PLASTIC	18.3	70	---	200	---	8	7	7
FB444	PLASTIC	25.6	70	---	200	---	13	11	10
FB450	PLASTIC	14.5	70	50	200	50	7	6	5
FB900	PLASTIC	14.5	70	50	200	50	7	6	5
FBA426	PLASTIC & STEEL	21.0	70	---	100	---	---	---	---
FBR423	PLASTIC & STEEL	23.0	70 @ 24" o.c. 70 @ 16" o.c.	---	90 @ 24" o.c. 150 @ 16" o.c.	---	---	---	---
FBR5407R	STEEL	8.0	35	50	50	50	4	3	3
FBR540712R	STEEL	8.0	35	50	50	50	4	3	3
FBR5415	STEEL	15.6	70 @ 24" o.c. 70 @ 16" o.c.	50	90 @ 24" o.c. 150 @ 16" o.c.	50	7	6	6
FBR54200R	STEEL	20.0	70 @ 24" o.c. 70 @ 16" o.c.	50	70 @ 24" o.c. 150 @ 16" o.c.	50	---	---	---
FBR5420SC	STEEL	20.0	70	50	70	50	---	8	8
FBS1423	STEEL	23.0	70	50	70	50	---	---	---
FBS405	STEEL	6.0	70	50	200	50	3	2	2
FBS405T	STEEL	6.0	70	50	200	50	3	2	2
FBS407	STEEL	8.0	70	50	200	50	4	3	3
FBS407T	STEEL	8.0	70	50	200	50	4	3	3
FBS415	STEEL	14.6	70	50	200	50	7	6	6
FBS415S	STEEL	14.6	70	50	70	50	7	6	6
FBS420	STEEL	20.0	70	50	200	50	10	8	8
FBS420S	STEEL	20.0	70	50	70	50	10	8	8
FBX900	PLASTIC & STEEL	14.5	70	50	70	50	7	6	5
FS420SCL	STEEL	20.0	—	—	50	50	10	8	8
FS427SCL	STEEL	30.0	—	—	50	50	10	8	8



Arlington's fan/fixture boxes are Patented or have Patents Pending

**Arlington®**

Distributed by

Fan/Fixture Box Rev 1022/25M

1 Stauffer Industrial Park. Scranton, PA 18517 **800/233.4717 • Fax 570/562.0646 • [www.aifittings.com](http://www.aifittings.com)**