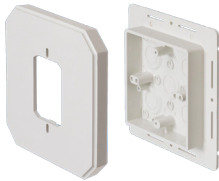


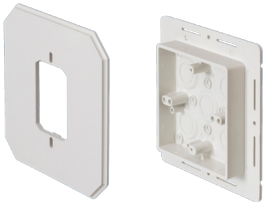
8081



8081F

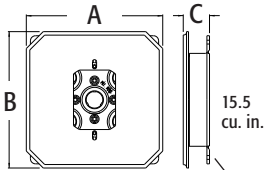


8082F (for 1/2" or less)



8081FC

8081FB



NOTE: 8081 is not flanged.

## Siding Box Kits for Fixtures and Devices

For smooth vertical mounting of fixtures and receptacles on sided structures. Paintable. UV rated plastic for long outdoor life.

CATALOG NUMBER	UPC/DCI/NAED MFG #018997	SIDING TYPE	STYLE	UNIT PKG	STD PKG	DIM A	DIM B	DIM C
8081*	80812	All Types	w/o Flange	25	25	6.650	6.650	1.280
8081F*†	80814	All Types	w/ Flange	25	25	6.650	6.650	1.280
8082F*	32240	1/2" or Less	w/ Flange	25	25	6.650	6.650	1.249
8081FC	10939	All Types	Cover Only	25	25	6.650	6.650	.750
8081FB*†	10941	All Types	Box Only	25	25	6.250	6.250	1.000



MADE IN USA.

\*Add suffix "GC" to Catalog # when ordering in Canada to include grounding clip, for example 8081FGC. † For Larger fixture mount see 8081FDBLC on pg L-3.

### FEATURES AND BENEFITS

- UL Listed electrical box
- Textured, paintable surface
- NM cable connector included
- Works on all siding types, Before or After the siding is up!
- Flanges may be removed for retrofit work

For Installation Instructions 'AFTER Siding is Up' see below. For Installation Instructions 'BEFORE Siding is Up' see page L-2.

### INSTALLATION INSTRUCTIONS

#### AFTER Siding is Up...

Without Flange (8081 & 8081DBL)

NOTE: 8081F, 8081FDBL, 8082F, 8091F, and 8091FDBL may also be installed when siding is already up. Score and break off flanges before step one (below).



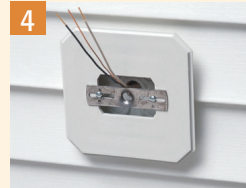
1 Disconnect electrical power. Place box section in desired location and pencil outline onto siding.



2 Cut along pencil line with razor knife and remove vinyl siding.



3 Mount box section to substrate. Caulk as required.



4 Place siding block over box section (8081 shown).



5 Connect wires and install fixture per manufacturer's instructions.

